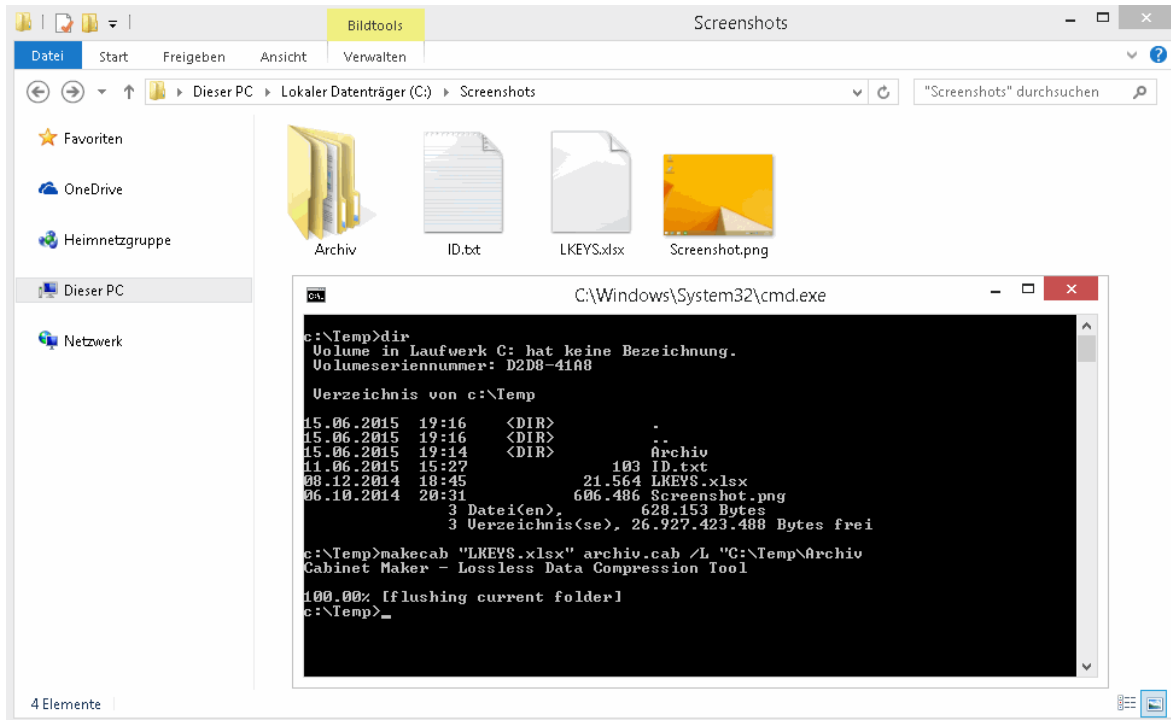


# Windows - .cab Dateien erzeugen

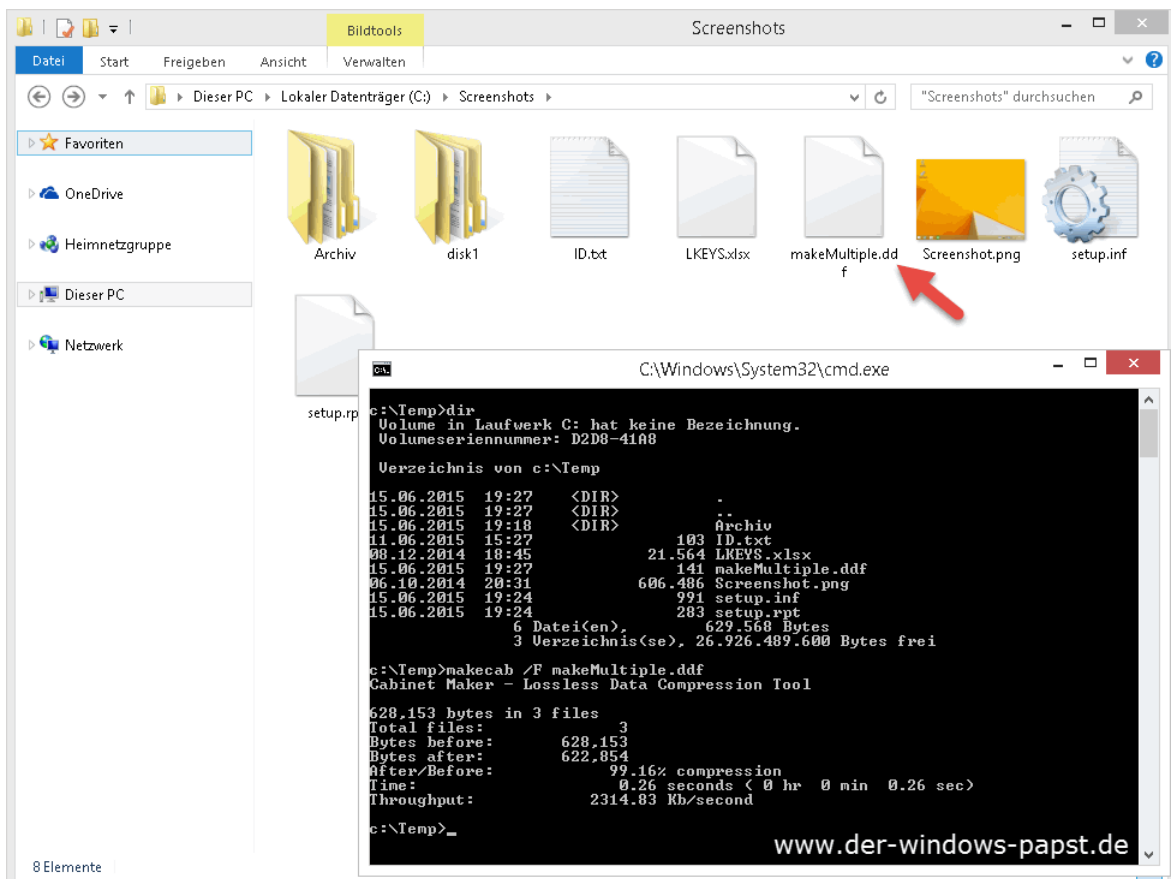
## Single File .cab

makecab „LKEYS.xlsx“ archiv.cab /L „C:\Temp\Archiv



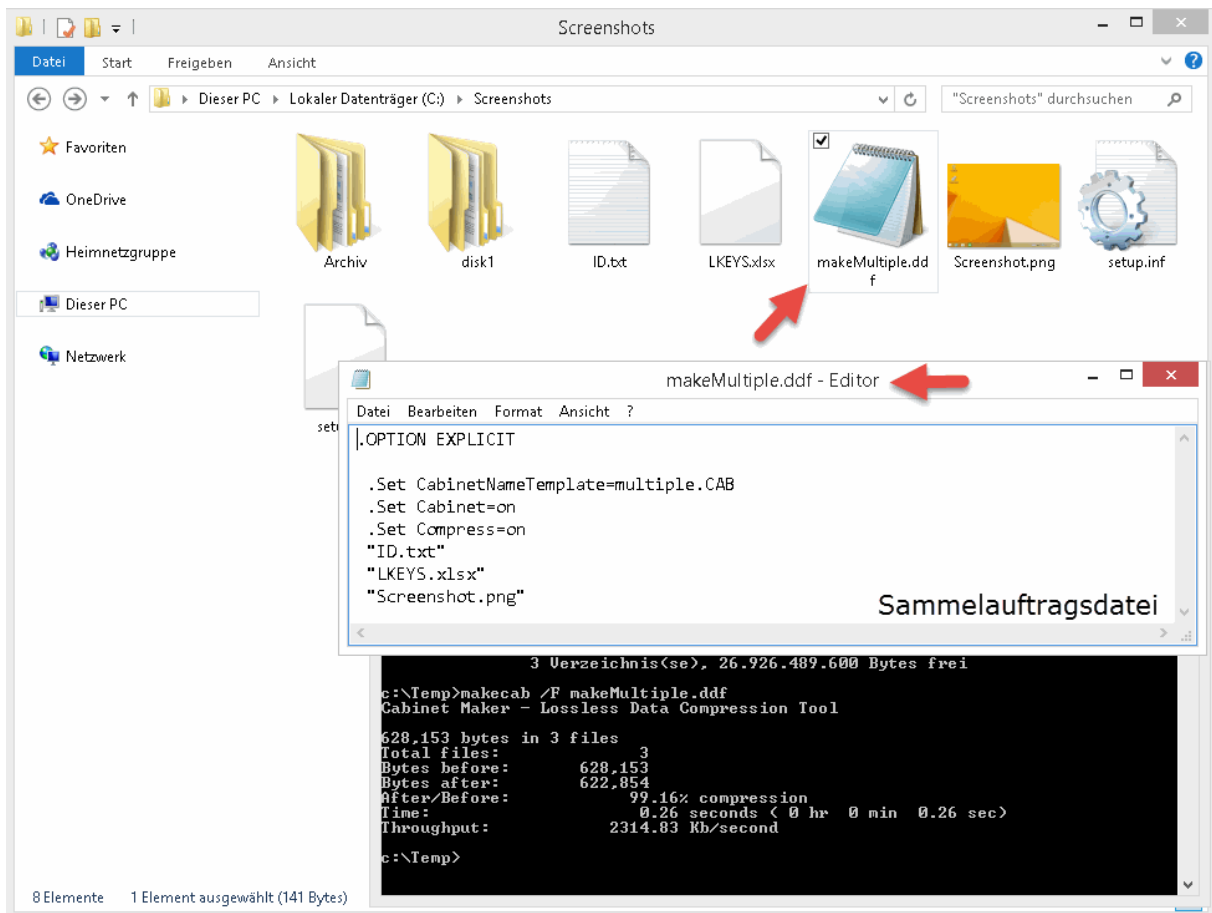
## Multi File .cab

makecab /F makeMultiple.ddf

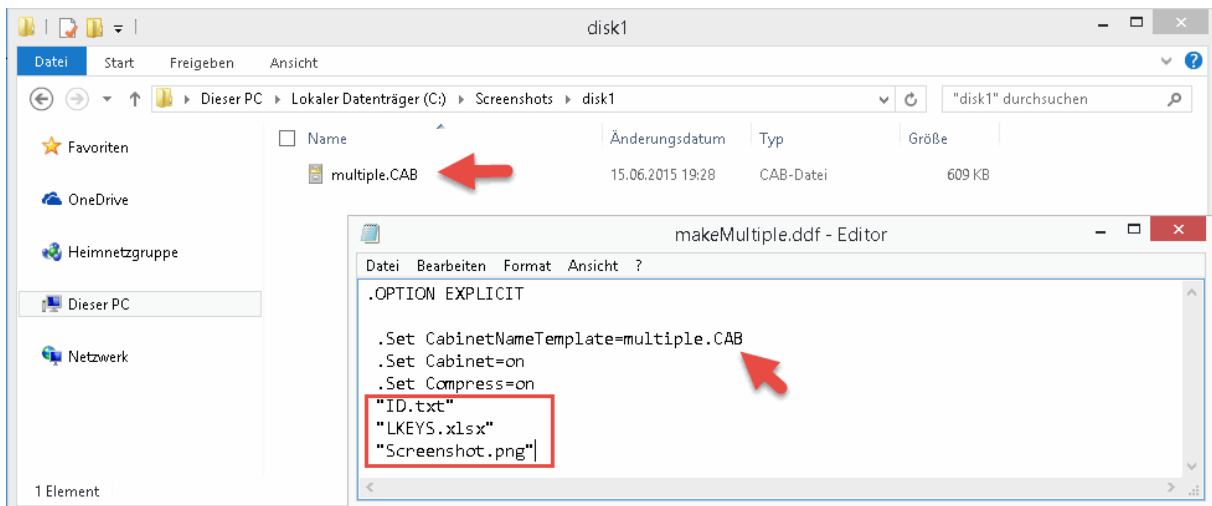


## Windows - .cab Dateien erzeugen

makeMultiple.ddf - Diamond Directive File (Richtlinie) inkludierter Anweisungen



multiple.cab

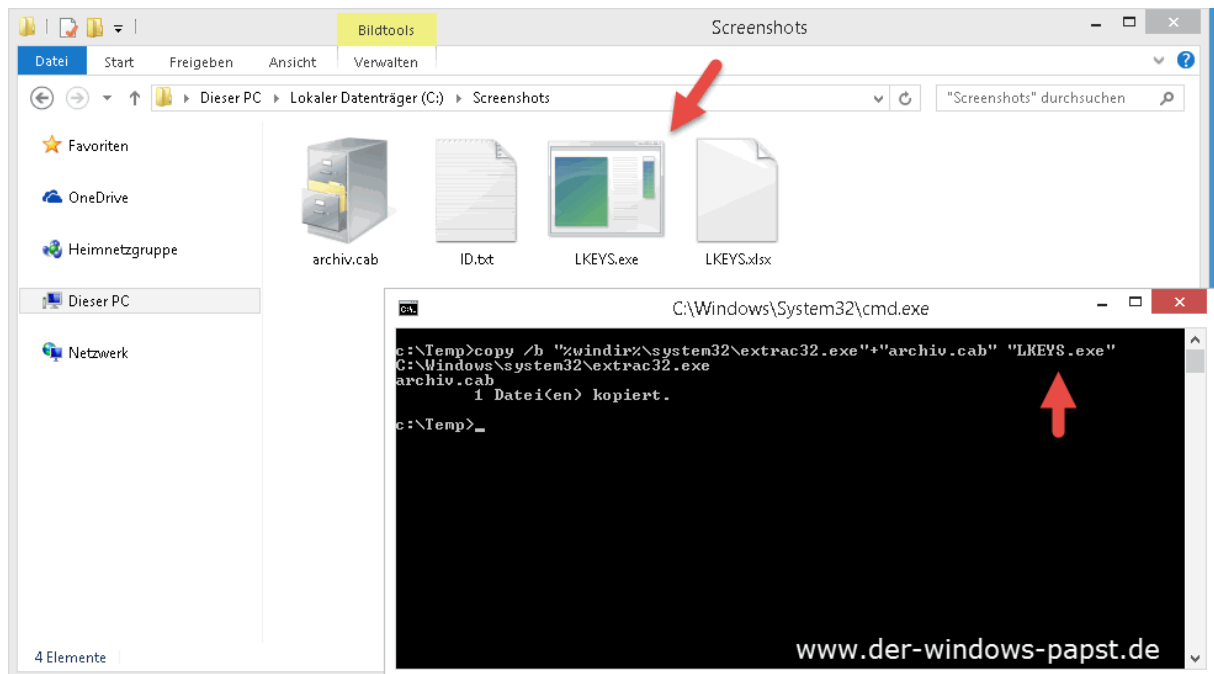


## Windows - .cab Dateien erzeugen

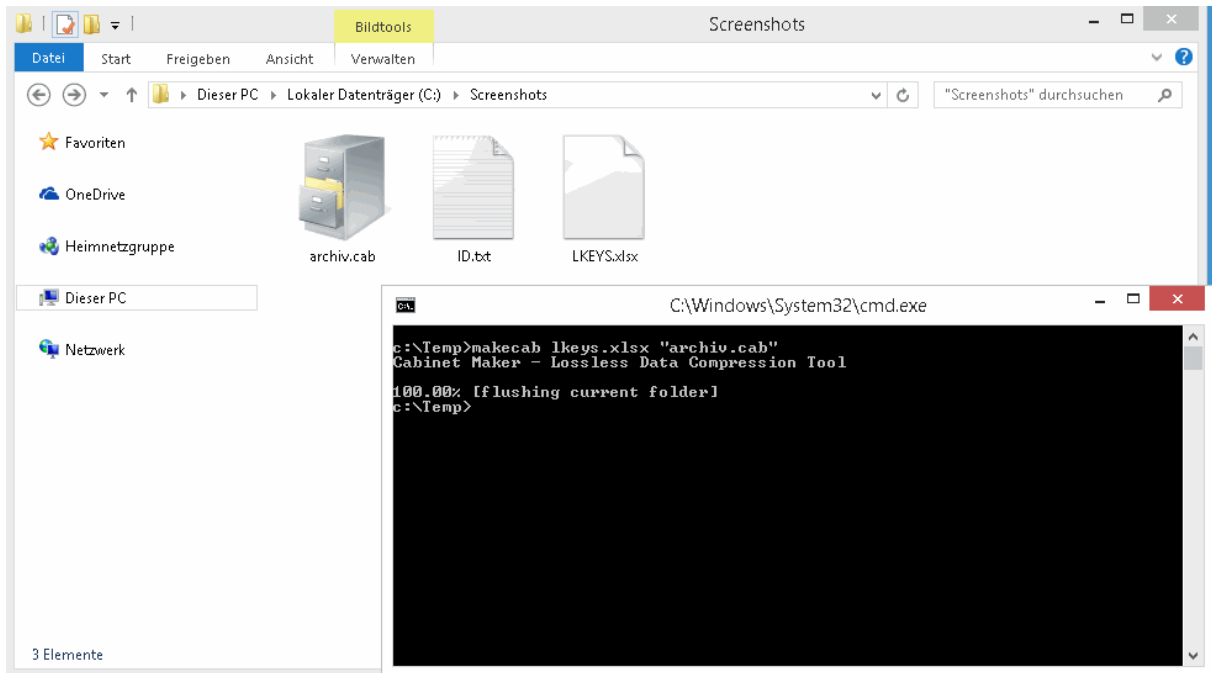
### Weitere .ddf Parameter

```
.set CabinetNameTemplate=multiple.CAB  
.set Cabinet=on  
.set Compress=on.Set MaxDiskSize=CDRom  
.set ReservePerCabinetSize=6144  
.set DiskDirectoryTemplate=  
.set CompressionType=MSZip  
.set CompressionLevel=7  
.set DiskDirectory1=c:\cabinets  
.set UniqueFiles="OFF"  
.set FailOnMissingSource=On  
.set MaxErrors=1  
.set MaxDiskSize=2147483136
```

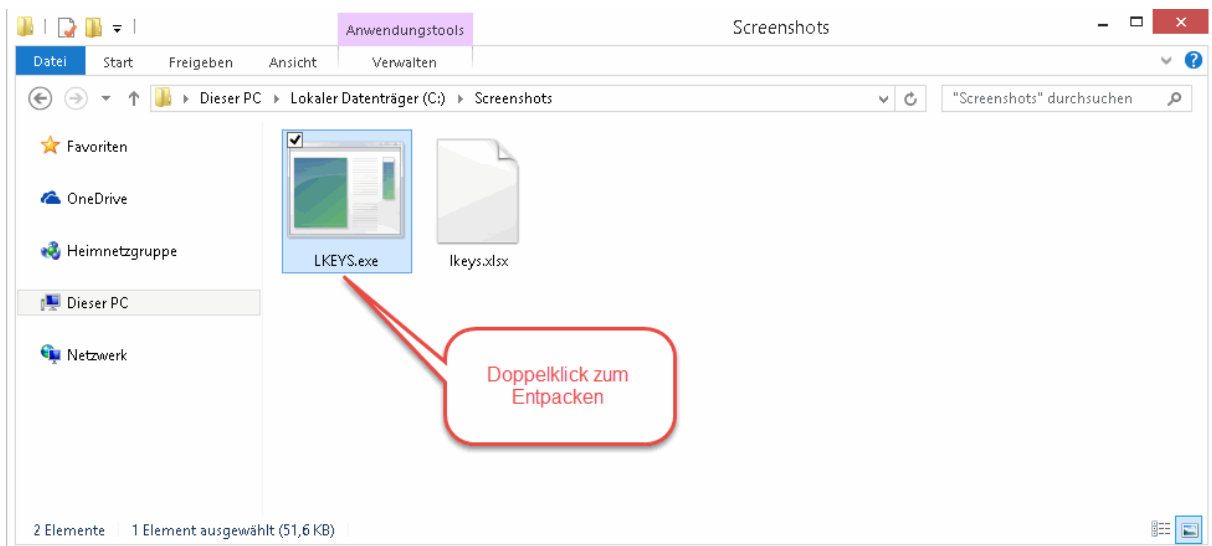
```
copy /b „%windir%\system32\extrac32.exe“+„archiv.cab“ „LKEYS.exe“
```



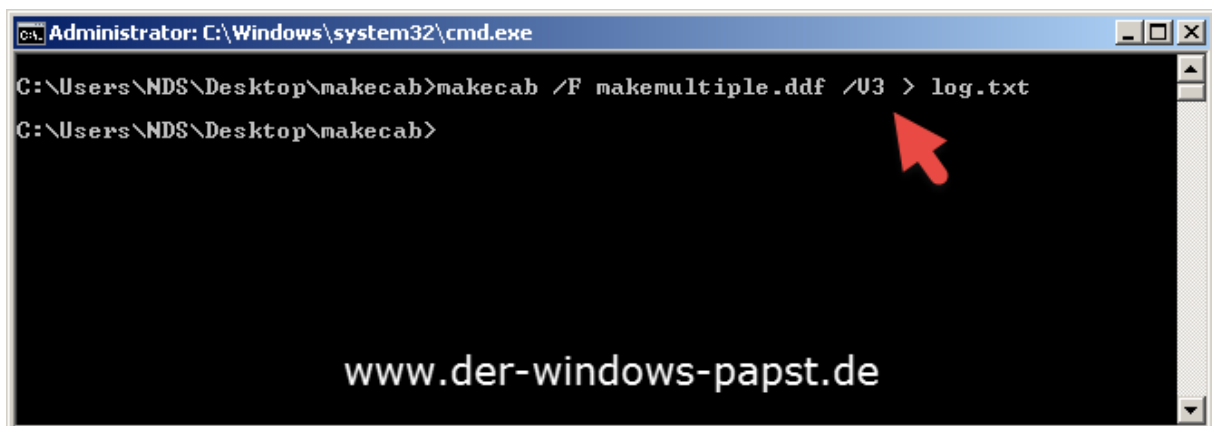
## Windows - .cab Dateien erzeugen



self extracting cab

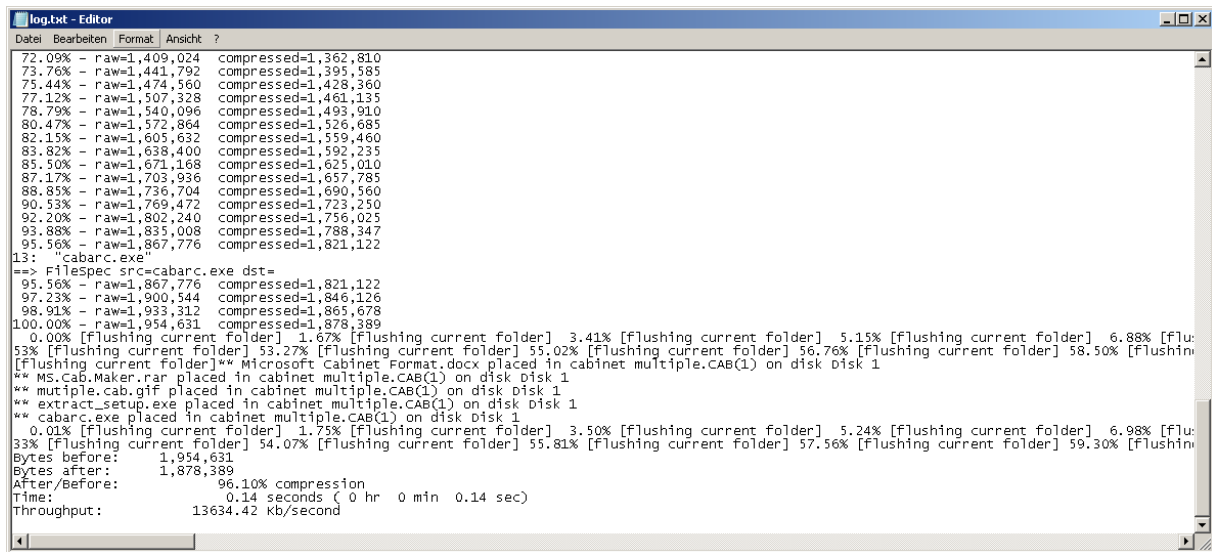


Create Log File Parameter /V3



## Windows - .cab Dateien erzeugen

Logfile > log.txt



```
log.txt - Editor
Datei Bearbeiten Format Ansicht ?
72.09% - raw=1,409,024 compressed=1,362,810
73.76% - raw=1,441,792 compressed=1,395,585
75.44% - raw=1,474,560 compressed=1,428,360
77.12% - raw=1,507,328 compressed=1,461,135
78.79% - raw=1,540,096 compressed=1,493,910
80.47% - raw=1,572,864 compressed=1,526,685
82.15% - raw=1,605,632 compressed=1,559,460
83.82% - raw=1,638,400 compressed=1,592,235
85.50% - raw=1,671,168 compressed=1,625,010
87.17% - raw=1,703,936 compressed=1,657,785
88.85% - raw=1,736,704 compressed=1,690,560
90.53% - raw=1,769,472 compressed=1,723,250
92.20% - raw=1,802,240 compressed=1,756,025
93.88% - raw=1,835,008 compressed=1,788,347
95.56% - raw=1,867,776 compressed=1,821,122
13: "cabarc.exe"
==> FileSpec src=cabarc.exe dst=
95.56% - raw=1,867,776 compressed=1,821,122
97.23% - raw=1,900,544 compressed=1,846,126
98.91% - raw=1,933,312 compressed=1,865,678
100.00% - raw=1,954,631 compressed=1,878,389
0.00% [flushing current folder] 1.67% [flushing current folder] 3.41% [flushing current folder] 5.15% [flushing current folder] 6.88% [Flu:
53% [flushing current folder] 53.27% [flushing current folder] 55.02% [flushing current folder] 56.76% [flushing current folder] 58.50% [Flu:
[flushing current folder]** Microsoft Cabinet Format.docx placed in cabinet multiple.CAB(1) on disk disk 1
** ms_cab_maker.rar placed in cabinet multiple.CAB(1) on disk disk 1
** multiple.cab.gif placed in cabinet multiple.CAB(1) on disk disk 1
** extract_setup.exe placed in cabinet multiple.CAB(1) on disk disk 1
** cabarc.exe placed in cabinet multiple.CAB(1) on disk disk 1
0.01% [flushing current folder] 1.75% [flushing current folder] 3.50% [flushing current folder] 5.24% [flushing current folder] 6.98% [Flu:
33% [flushing current folder] 54.07% [flushing current folder] 55.81% [flushing current folder] 57.56% [flushing current folder] 59.30% [Flu:
Bytes before: 1,954,631
Bytes after: 1,878,389
After/Before: 96.10% compression
Time: 0.14 seconds ( 0 hr 0 min 0.14 sec)
Throughput: 13634.42 kb/second
```