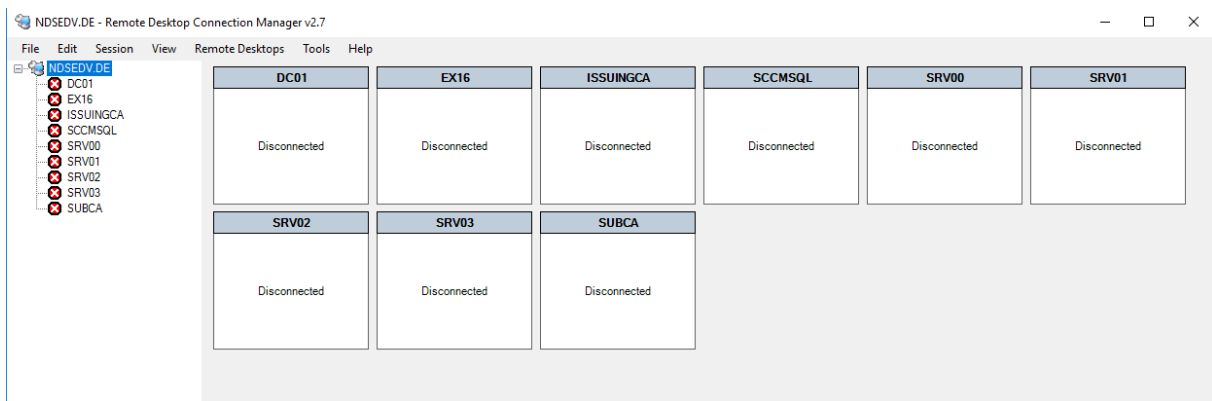




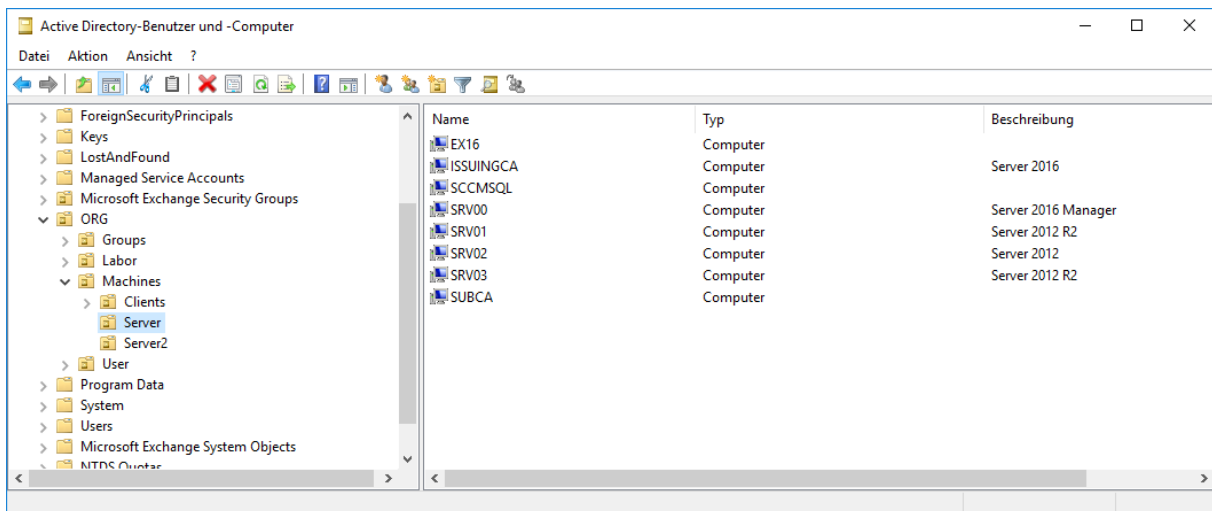


## Remote Desktop Connection Manager RDG Datei erstellen

Der Remote Desktop Connection Manager:



ADUC:





## Remote Desktop Connection Manager RDG Datei erstellen

Das Template kann entsprechend angepasst oder erweitert werden:

```
Administrator: Windows PowerShell ISE (x86)
Datei Bearbeiten Ansicht Tools Debuggen Add-Ons Hilfe

RDCFile.ps1 X
8
9 $template = @"
10 <?xml version="1.0" encoding="utf-8"?>
11 <RDCMan schemaVersion="1">
12   <version>2.2</version>
13   <file>
14     <credentialsProfiles>
15       <credentialsProfile inherit="None">
16         <profileName scope="Local">NAME</profileName>
17         <userName>USERNAME</userName>
18         <password></password>
19         <domain>DOMAIN</domain>
20       </credentialsProfile>
21     </credentialsProfiles>
22     <properties>
23       <expanded>True</expanded>
24       <name></name>
25     </properties>
26     <loginCredentials inherit="None">
27       <profileName scope="File">None</profileName>
28     </loginCredentials>
29     <gatewaySettings inherit="None">
30       <enabled>False</enabled>
31       <hostName></hostName>
32       <loginMethod>NTLM</loginMethod>
33       <localBypass>False</localBypass>
34       <credSharing>True</credSharing>
35       <profileName scope="File">None</profileName>
36     </gatewaySettings>
37     <remoteDesktop inherit="None">
38       <sameSizeAsClientArea>True</sameSizeAsClientArea>
39       <fullScreen>False</fullScreen>
40       <colorDepth>24</colorDepth>
41     </remoteDesktop>
42     <localResources inherit="None">
43       <audioRedirection>Client</audioRedirection>
44       <audioRedirectionQuality>Dynamic</audioRedirectionQuality>
45       <audioCaptureRedirection>DoNotRecord</audioCaptureRedirection>
46       <keyboardHook>FullScreenClient</keyboardHook>
47       <redirectClipboard>True</redirectClipboard>
48       <redirectDrives>False</redirectDrives>
49       <redirectDrivesList />
50       <redirectPrinters>False</redirectPrinters>
51       <redirectPorts>False</redirectPorts>
52       <redirectSmartCards>False</redirectSmartCards>
53       <redirectPnpDevices>False</redirectPnpDevices>
54     </localResources>
55     <securitySettings inherit="None">
56       <authentication>None</authentication>
57     </securitySettings>
58     <encryptionSettings inherit="FromParent">
59     </encryptionSettings>
60     <server>
61       <displayName></displayName>
62       <name></name>
63       <comment />
64       <loginCredentials inherit="FromParent" />
65       <connectionSettings inherit="FromParent" />
66       <gatewaySettings inherit="FromParent" />
67     </server>
68   </file>
69 </RDCMan>
70 "@
```

PS C:\WINDOWS\system32>

Ln 1 Spalte 1 100%



## Remote Desktop Connection Manager RDG Datei erstellen

### Import-Module ActiveDirectory

```
$EnableRDGW = $true
$RDGW = "rdgw.$env:USERDNSDOMAIN"

$domain = $env:userdomain
$OutputFile = "$home\$env:USERDNSDOMAIN.rdg"

$template = @'
<?xml version="1.0" encoding="utf-8"?>
<RDCMan schemaVersion="1">
  <version>2.2</version>
  <file>
    <credentialsProfiles>
      <credentialsProfile inherit="None">
        <profileName scope="Local">NAME</profileName>
        <userName>USERNAME</userName>
        <password></password>
        <domain>DOMAIN</domain>
      </credentialsProfile>
    </credentialsProfiles>
    <properties>
      <expanded>True</expanded>
      <name></name>
    </properties>
    <logonCredentials inherit="None">
      <profileName scope="File">None</profileName>
    </logonCredentials>
    <gatewaySettings inherit="None">
      <enabled>False</enabled>
      <hostName></hostName>
      <logonMethod>NTLM</logonMethod>
      <localBypass>False</localBypass>
      <credSharing>True</credSharing>
      <profileName scope="File">None</profileName>
    </gatewaySettings>
    <remoteDesktop inherit="None">
      <sameSizeAsClientArea>True</sameSizeAsClientArea>
      <fullScreen>False</fullScreen>
      <colorDepth>24</colorDepth>
    </remoteDesktop>
    <localResources inherit="None">
      <audioRedirection>Client</audioRedirection>
      <audioRedirectionQuality>Dynamic</audioRedirectionQuality>
      <audioCaptureRedirection>DoNotRecord</audioCaptureRedirection>
      <keyboardHook>FullScreenClient</keyboardHook>
      <redirectClipboard>True</redirectClipboard>
      <redirectDrives>False</redirectDrives>
      <redirectDrivesList />
      <redirectPrinters>False</redirectPrinters>
      <redirectPorts>False</redirectPorts>
      <redirectSmartCards>False</redirectSmartCards>
      <redirectPnpDevices>False</redirectPnpDevices>
    </localResources>
    <securitySettings inherit="None">
      <authentication>None</authentication>
    </securitySettings>
    <encryptionSettings inherit="FromParent">
    </encryptionSettings>
    <server>
      <displayName></displayName>
      <name></name>
      <comment />
      <logonCredentials inherit="FromParent" />
      <connectionSettings inherit="FromParent" />
      <gatewaySettings inherit="FromParent" />
      <remoteDesktop inherit="FromParent" />
      <localResources inherit="FromParent" />
      <securitySettings inherit="FromParent" />
      <displaySettings inherit="FromParent" />
    </server>
  </file>
</RDCMan>
'@

$template | Out-File $home\RDCMan-template.xml -encoding UTF8
```



## Remote Desktop Connection Manager RDG Datei erstellen

```
$xml = New-Object xml
$xml.Load("$home\RDCMan-template.xml")

$file = (@($xml.RDCMan.file.properties)[0]).Clone()
$file.name = "$env:USERDNSDOMAIN"
$xml.RDCMan.file.properties | Where-Object { $_.Name -eq "" } | ForEach-Object {
[void]$xml.RDCMan.file.ReplaceChild($file,$_)
}

if ($EnableRDGW -eq $true) {
    $xml.RDCMan.file.gatewaySettings.hostName = $RDGW
    $xml.RDCMan.file.gatewaySettings.enabled = "True"
}

$xml.RDCMan.file.credentialsProfiles.credentialsProfile.profileName.'#text' =
"$env:USERDOMAIN\$env:USERNAME"
$xml.RDCMan.file.credentialsProfiles.credentialsProfile.userName = "$env:USERNAME"
$xml.RDCMan.file.credentialsProfiles.credentialsProfile.domain = "$env:USERDOMAIN"
$xml.RDCMan.file.logonCredentials.profileName.'#text' =
"$env:USERDOMAIN\$env:USERNAME"
$xml.RDCMan.file.gatewaySettings.profileName.'#text' =
"$env:USERDOMAIN\$env:USERNAME"

$server = (@($xml.RDCMan.file.server)[0]).Clone()
get-adcomputer -LDAPFilter "(&(objectCategory=computer)(operatingSystem=windows
Server*)(!serviceprincipalname=MSClusterVirtualServer*)(!(userAccountControl:1.2.8
40.113556.1.4.803:=2)))" -Property name,dnshostname,description | sort-object Name
| select name,dnshostname,description |
ForEach-Object {
    $server = $server.Clone()
    $server.DisplayName = $_.Name
    $server.Name = $_.DNSHostName
    if ($_.Description -ne $Null) {
        $server.comment = $_.Description
    }
    else {
        $server.comment = ""
    }
}

$xml.RDCMan.file.AppendChild($server) > $null}

$xml.RDCMan.file.server | Where-Object { $_.Name -eq "" } | ForEach-Object {
[void]$xml.RDCMan.file.RemoveChild($_)
}

$xml.Save($OutputFile)

Remove-Item $home\RDCMan-template.xml -Force

Write-Output "$OutputFile Created"
```