



## Exchange POP IMAP Logging

Mit `Get-PopSettings | fl` prüfen wir im Vorfeld ob das Logging eingeschaltet ist. Ist das Logging aus; ist der Wert von `ProtocolLogEnabled` = `false`

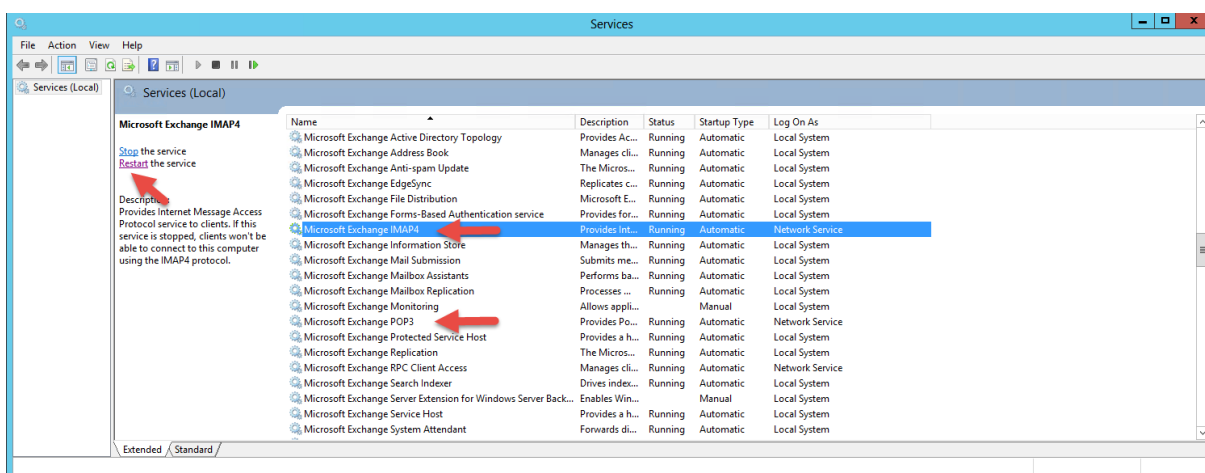
Zum Aktivieren des Loggings von POP3 und IMAP gehen wir wie folgt vor.

`Set-PopSettings -ProtocolLogEnabled $true`

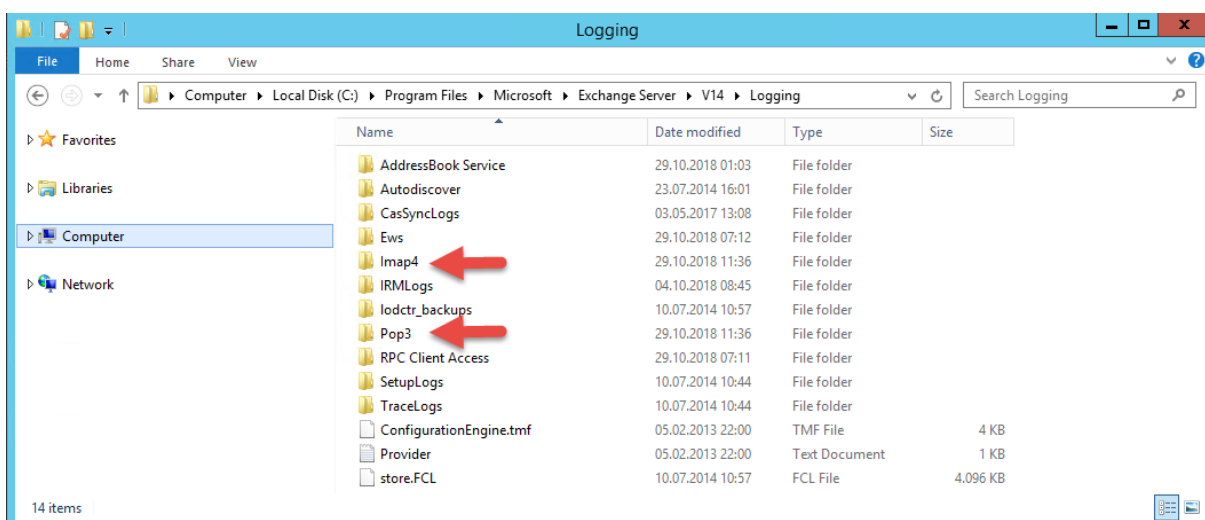
`Set-ImapSettings -ProtocolLogEnabled $true`

```
Machine: cs-
[PS ] C:\Windows\system32>Set-PopSettings -ProtocolLogEnabled $true
[PS ] C:\Windows\system32>Set-ImapSettings -ProtocolLogEnabled $true
[PS ] C:\Windows\system32>services.msc
[PS ] C:\Windows\system32>
```

Dienste einmal durchstarten



Die Ordner werden angelegt





## Exchange POP IMAP Logging

Gegenprüfung

Get-PopSettings | fl

```
Machine: cs

[PS] C:\Windows\system32>Get-PopSettings | fl

RunspaceId      : 1aaca62d-9d2f-48b1-b21f-d5b25e56608d
Name            : 1
ProtocolName    : POP3
MaxCommandSize : 512
MessageRetrievalSortOrder : Ascending
InencryptedOrTLSBindings : <0.0.0.0:110>
SSLBindings     : <0.0.0.0:995>
InternalConnectionSettings : <cs:.....local:995:SSL, cs.....local:110:TLS>
ExternalConnectionSettings : <>
X509CertificateName : cas.ccs.local
Banner          : The Microsoft Exchange POP3 service is ready.
LoginType       : SecureLogin
AuthenticatedConnectionTimeout : 00:30:00
PreAuthenticatedConnectionTimeout : 00:01:00
MaxConnections : 2147483647
MaxConnectionFromSingleIP : 2147483647
MaxConnectionsPerUser : 16
MessageRetrievalMimeFormat : BestBodyFormat
ProxyTargetPort : 110
CalendarItemRetrievalOption : iCalendar
OwaServerUrl    :
EnableExactRFC822Size : False
LiveIdBasicAuthReplacement : False
SuppressReadReceipt : False
ProtocolLogEnabled : True
EnforceCertificateErrors : False
LogFileLocation : C:\Program Files\Microsoft\Exchange Server\U14\Logging\Pop3
LogFileRollOverSettings : Daily
LogPerFileSizeQuota : 0 B (0 bytes)
ExtendedProtectionPolicy : None
EnableGSSAPIAndNLMAuth : True
Server          : CS-MSX-1
AdminDisplayName :
ExchangeVersion : 0.10 (14.0.100.0)
DistinguishedName : CN=1,CN=POP3,CN=Protocols,CN=CS-MSX-1,CN=Servers,CN=Exchange Administrative Group (FYDIBOHF23SPDLT),CN=Administrative Groups,CN=cs:.....,CN=Microsoft Exchange,CN=Services,CN=Configuration,DC=.....,DC=local

Identity        : CS-MSX-1
Guid            : a3019efa-0eef-41f3-b2e3-9317df2eb010
ObjectCategory : local/Configuration/Schema/ns-Exch-Protocol-Cfg-POP-Server
ObjectClass     : <top, protocolCfg, protocolCfgPOP, protocolCfgPOPServer>
WhenChanged    : 29.10.2018 11:36:06
WhenCreated    : 10.07.2014 10:53:21
WhenChangedUTC : 29.10.2018 10:36:06
WhenCreatedUTC : 10.07.2014 08:53:21
OrganizationId :
OriginatingServer : cs:.....local
IsValid        : True

[PS] C:\Windows\system32>_
```